

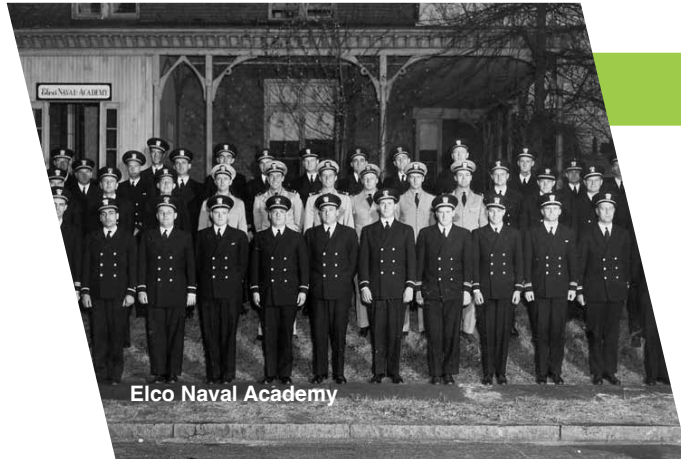
Elco[®]



The trusted solution for electric boating



Where it all began, the 1893 Chicago World's Fair



Elco Naval Academy



Elco PT Boat 109

ELCO TODAY

By combining traditional, proven designs with trailblazing motor and control technology, Elco leads the industry in electric propulsion. Boating enthusiasts trust Elco for its durable, powerful, and efficient motors that are built to the level of excellence that has guided the company for more than 130 years. Elco delivers with proven, well designed, long lasting, inboard and outboard electric boat motors.

HISTORY

Elco's roots in American boat building stretch back to the 1893 Chicago World's Fair, where a fleet of 55 Elco Electric Launches shuttled over one million passengers around the Fair's man-made lake. Over the years, Elco Motor Yachts has built thousands of vessels for everyone from royals to adventurers, titans of the industry to everyday yachtsmen, as well as U.S. and Allied Navies.

OUTBOARD

Elco's outboard motors might look and feel like standard outboard motors, but beneath their rugged and durable exterior lies the proven design and leading-edge electric propulsion technology that has made our outboards the leader in power and performance. Elco outboard motors are available in a wide range of horsepower with remote or tiller control and long or short shaft lengths to fit boats of all shapes and sizes. Elco outboards look like traditional outboards because for us, they are—we've been at the forefront of electric propulsion for 130 years.



Powered by **EP-9.9 OUTBOARD**



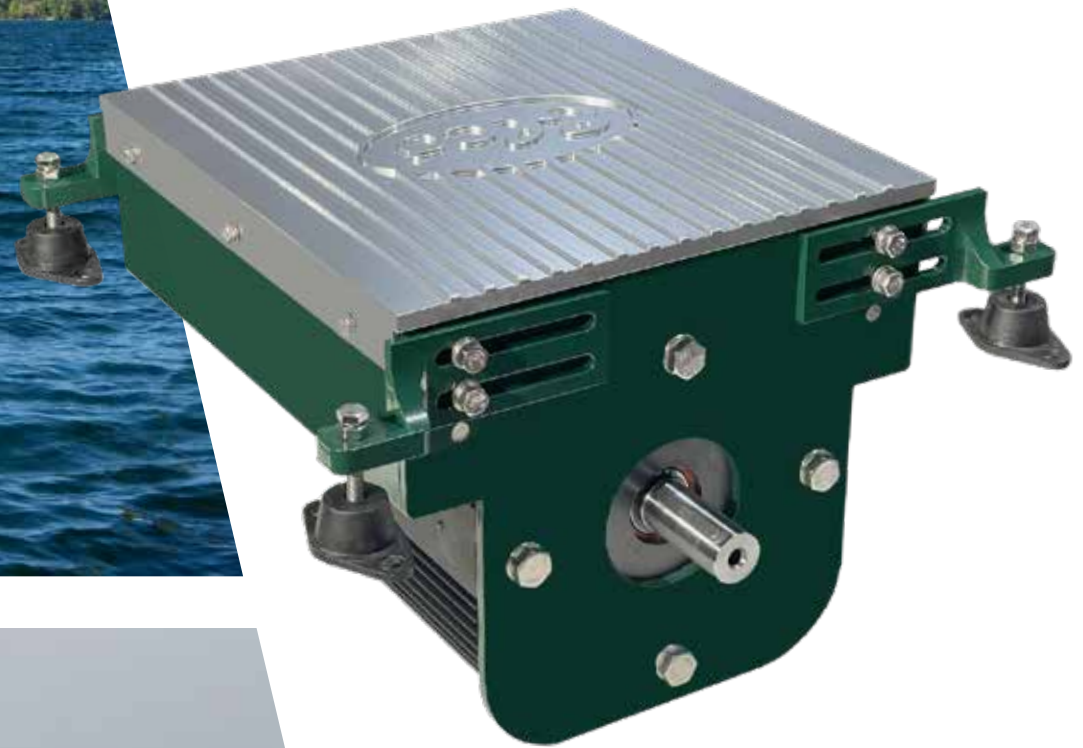
Powered by **TWIN EP-20 OUTBOARDS**



Powered by **EP-12 INBOARD**

New Design

Proven Reliability



Powered by **EP-20 INBOARD**

INBOARD

Elco's inboard propulsion system uses highly reliable AC drives that are powerful and easy to maintain, with a service life up to 50,000 hours. Whether powering a new build or retrofitting a traditional propulsion boat, Elco's inboard systems are designed with easy installation in mind. They are suitable for sailboats, launches, trawlers, catamarans, workboats, water taxis and more, from 15 feet through 120 feet, with a diesel horsepower replacement range from 2 hp to 200 hp.

the **DASH**

Bluetooth Dashboard Display

Elco's motor controllers and Bluetooth connectivity integrates, with a quick glance, all important motor and battery information into any boating environment through the downloadable Elco-Dash app for phones, watches or tablets.



Powered by EP-70 INBOARD




INBOARD SPECS



Powered by EP-70 INBOARD



MODEL	BOAT SIZE RANGES	COMPARABLE HP RATING	HP REPLACEMENT RANGE	BATTERY VOLTAGE	AMPS (MAXIMUM)	KILOWATTS PEAK OUTPUT	KILOWATTS CONTINUOUS OUTPUT	WEIGHT
EP-6	up to 25'	6 HP	2-8 HP	24 volts	125 amps	4.4 kW	3 kW	68 lbs
EP-12	20' - 35'	12 HP	8-18 HP	48 volts	125 amps	8.8 kW	6 kW	70 lbs
EP-20	25' - 40'	20 HP	15-25 HP	48 volts	200 amps	14.7 kW	9.6 kW	72 lbs
EP-40	32' - 48'	40 HP	25-45 HP	108 volts	167 amps	29.4 kW	17 kW	400 lbs
EP-70	38' - 56'	70 HP	45-85 HP	108 volts	275 amps	51.5 kW	29.75 kW	650 lbs
EP-100	50' - 85'	100 HP	75-125 HP	144 volts	295 amps	73.5 kW	42.5 kW	740 lbs
EP-200	60' - 120'	200 HP	150-250 HP	288 volts	598 amps	147 kW	85 kW	1,780 lbs

 *4 hours of boating is typical at various speeds with suggested battery amp hours (Ah). Range may vary based on boat size, fully loaded weight, throttle management and boating conditions. U.S. Patent Number 8,912,698

Powered by EP-20 OUTBOARD

OUTBOARD SPECS



Powered by EP 9.9 OUTBOARD

MODEL	COMPARABLE HP RATING	INPUT POWER	BATTERY VOLTAGE	AMPS (MAXIMUM)	STATIC THRUST	WEIGHT
EP-5	5 HP	3 kW	24 volts	125 amps	98 lbs	62 lbs
EP-9.9	9.9 HP	4.3 kW	48 volts	90 amps	195 lbs	65 lbs
EP-14	14 HP	6.2 Kw	48 volts	130 amps	275 lbs	82 lbs
EP-20	20 HP	8.4 kW	48 volts	175 amps	390 lbs	85 lbs
EP-30	30 HP	15.8 kW	96 volts	165 amps	585 lbs	90 lbs
EP-50	50 HP	26.4 kW	96 volts	275 amps	975 lbs	190 lbs



*4 hours of boating is typical at various speeds with suggested battery amp hours (Ah). Range may vary based on boat size, fully loaded weight, throttle management and boating conditions.

Elco OUTBOARD Benefits

- Zero emissions
- No gas/petrol spilling into the water
- Quiet, enjoy your surroundings
- Smooth operation
- Consistent power throughout the speed range
- Minimal maintenance
- Equipped with emergency stop switch
- Overload & temperature protection
- A built-in "Get Home Safe" battery alert system

Elco INBOARD Benefits

- One moving part
- Minimal maintenance
- No exhaust fumes
- Silent operation with zero noise pollution
- Recyclable batteries
- Reduced carbon footprint
- Cruise all day and charge overnight for just pennies
- Motors fit most standard engine mounts
- Never needs a tune-up; no need to winterize
- Water resistant
- Run cool and eliminate heat in the cabin
- Suggested service life - 50,000 hours before maintenance



Monterey Bay Eco Tours - California
 Powered by **TWIN EP-20 OUTBOARDS**



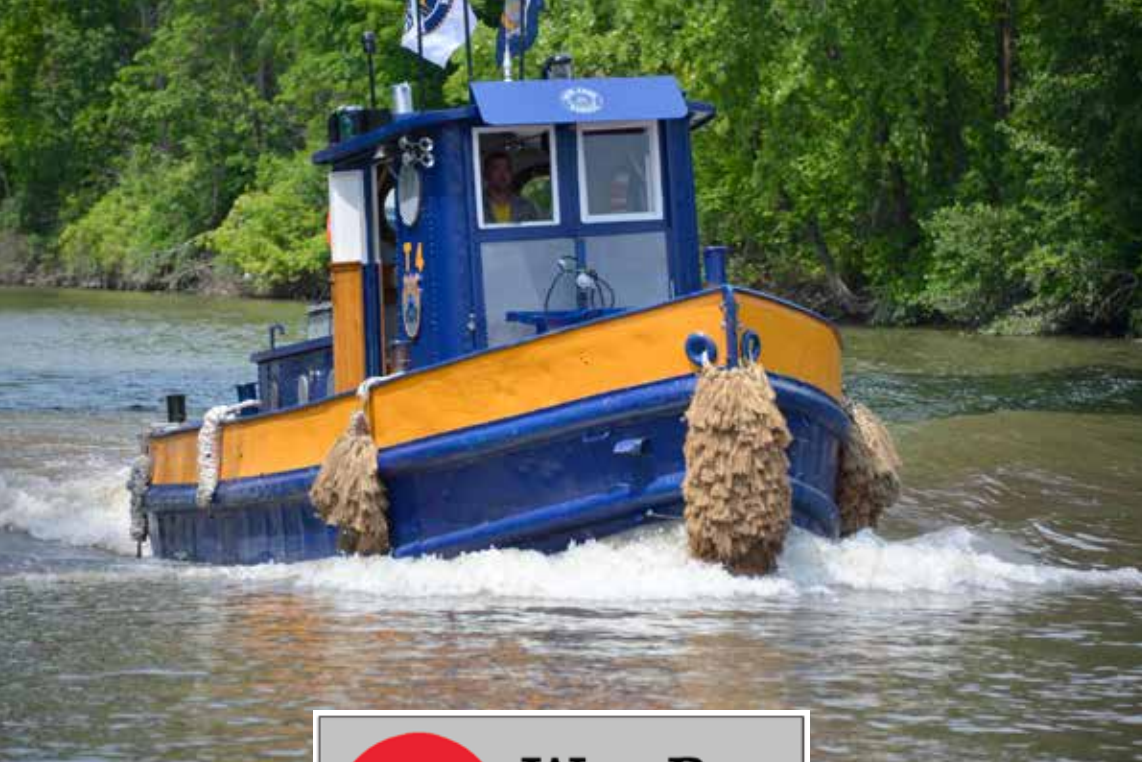
CUSTOMER STORIES



- 60,000 HOURS of RUNTIME
- ZERO DOWNTIME
- ZERO MAINTENANCE
- ZERO EMISSIONS

**Big Canoe: Georgia
EP-9.9 OUTBOARD RENTAL FLEET**





Powered by Diesel

Re-Powered by Elco

ALL Electric:

Electric Motor Only

An electric motor powered by batteries drives the propeller shaft. This system is ideal for day cruises in displacement and semi-displacement boats such as sailboats, launches, tenders and more. Installation is simple, the motor fits most standard engine mounts. The batteries can be strategically positioned to keep the boat balanced.



“The all-electric system eliminates exhaust emissions and the potential for fuel spills, while lowering maintenance costs and reducing noise. The result is a more environmentally and economically sustainable solution.”

New York State Canal Corporation

Elco understands that there is not a one-size-fits-all solution when it comes to electric and hybrid propulsion. That is why we offer design and engineering consulting services. Please contact us if you are interested in learning more.



DC-Hybrid-Electric:

Electric Motor & DC Generator

With the addition of a generator connected to the batteries, you can power the motor and charge simultaneously. This provides boaters with the option of running the motor strictly off battery power for a quiet, clean boating experience, or switching to the generator when the batteries are low. The DC-Hybrid-Electric configuration is great for boaters who go on day cruises and want to have a backup power supply.

AC-Hybrid-Parallel:

Electric Motor & Combustion Engine with AC Generator

The Hybrid-Parallel configuration features a diesel or gas engine that is connected to the propeller shaft through an electric motor and a clutching system. This allows the engine to drive the propeller directly and charge the batteries when the electric motor is inactive. With the flip of a switch, the vessel can be powered exclusively by the electric motor that produces zero emissions.



Jeff Reese & The Black Pearl: Georgia EP-20 OUTBOARD

I love the Elco motor and it checks every box power, ease of operation, and dependability," Reese says. "Back when I was fishing the mainstream tournament circuit, I was really proud of my \$70,000 Ranger bass boat, but I'm more proud of The Black Pearl that I created myself, from just a no-frills duck-boat shell."

Bill Whitmore, New Jersey EP-5 OUTBOARD

We chose an Elco EP-5 for our "new" 14' 1959 Lone Star to provide quiet morning and evening cruises. The family loves the motor as does Hamish our Westie, it runs nice and quiet and is very easy to use.— It now glides fumelessly around a small New Jersey lake.

Kim Anquetil: Australia EP-20 INBOARD

I could not be happier with the motor. My experience with Elco has exceeded my expectations. The customer service has been flawless – even when dealing with a 16-hour time difference. Enquiries were all answered promptly, and transactions were simple. I was updated continuously during the delivery process. The Elco Motor was as easy to install as promised. The process was far simpler than any motor I have dealt with in the past.

Finger Lakes Boating Museum EP-40 INBOARD

With an amazing history dating back to 1924 the PAT II makes waves with the future of boating with an All Electric Dive from Elco. With an air cooled Elco EP-40 motor the PAT II has a cruising speed of 6.5 knots and a maximum speed of just around 10 knots, operating in complete silence with a service life of 50,000 hours.



Joe and Wendy Kitchell: California TWIN EP-20 OUTBOARDS

Our tour is an hour and a half on the Elkhorn Slough. The Slough is the home to the largest population of Southern Sea Otters as well as a refuge for Harbor Seals, sea lions and tons of migratory birds. Passengers enjoy viewing this abundance of wildlife at a safe distance on the quiet, smooth, comfortable fully electric catamaran without all the noise and vibration of a gas powered engine.

Dorena Radomski, Michigan EP-20 OUTBOARD

I am very pleased with the motor, I'm from Europe, and I like quality. I'm new to electric propulsion, and I'm so happy I made the decision to get rid of the combustion motor. The motor has no problem pushing or pulling the boat, and it has a long running time. We fish, get the grand kids out, pull them on tubes... and they have a ball. I'm more of a naturalist, and it works for me—the quiet, the performance, all of it.

Patricia and Dan Fitzgerald: California EP-12 INBOARD

I performed the installation myself and enjoyed the project very much. The support from Elco made it much easier than I anticipated and we are extremely happy with the outcome. The ease of use and reduced maintenance has made using the boat stress free — no more flushing the engine with fresh water! We now cruise silently, with no vibration, and no gas fumes. It's just perfect.

Schell Boatworks, Elco Dealer EP-40 INBOARD

Electric boat operation is such a cool experience. The silent propulsion is really just amazing You can enjoy the people you're with and have conversation without the sound of a diesel while keeping the environment safe. The electric motors over all are simple, powerful and quiet – perfect for all types of boats but especially launches like this beautiful boat, Segar.



THE ORIGINAL ELECTRIC LAUNCH

Elco, the original electric boat company, redefined pleasure boating in 1893 with the introduction of the original production electric-powered boat. Quiet, reliable, impeccably crafted and environmentally friendly, owning either a newly built or classic Elco Launch that has been lovingly restored is a lifestyle choice rich in history, innovation, expertise, and luxury. The form is as critical as function and the interaction between the two is what makes the Elco boating experience a timeless one. While our electric motor business is our primary focus, we still take custom orders of our original electric launch.

visit elcomotoryachts.com to find out more

Do you own an Elco Boat or one of our Electric Motors?



Connect with other Elco owners on our private Facebook group: Join The Port Elco Club.



Past Port Elco Members

Henry Ford
Charles Lindberg
John Jacob Astor
Bernard Baruch
Hiram Walker

The De Beers family
Howard Johnson
Baron Nathaniel de Rothschild
Thomas Edison

*The future of our environment
depends on the choices we make today.
Go Electric*



elcomotoryachts.com | 877-411-3526